

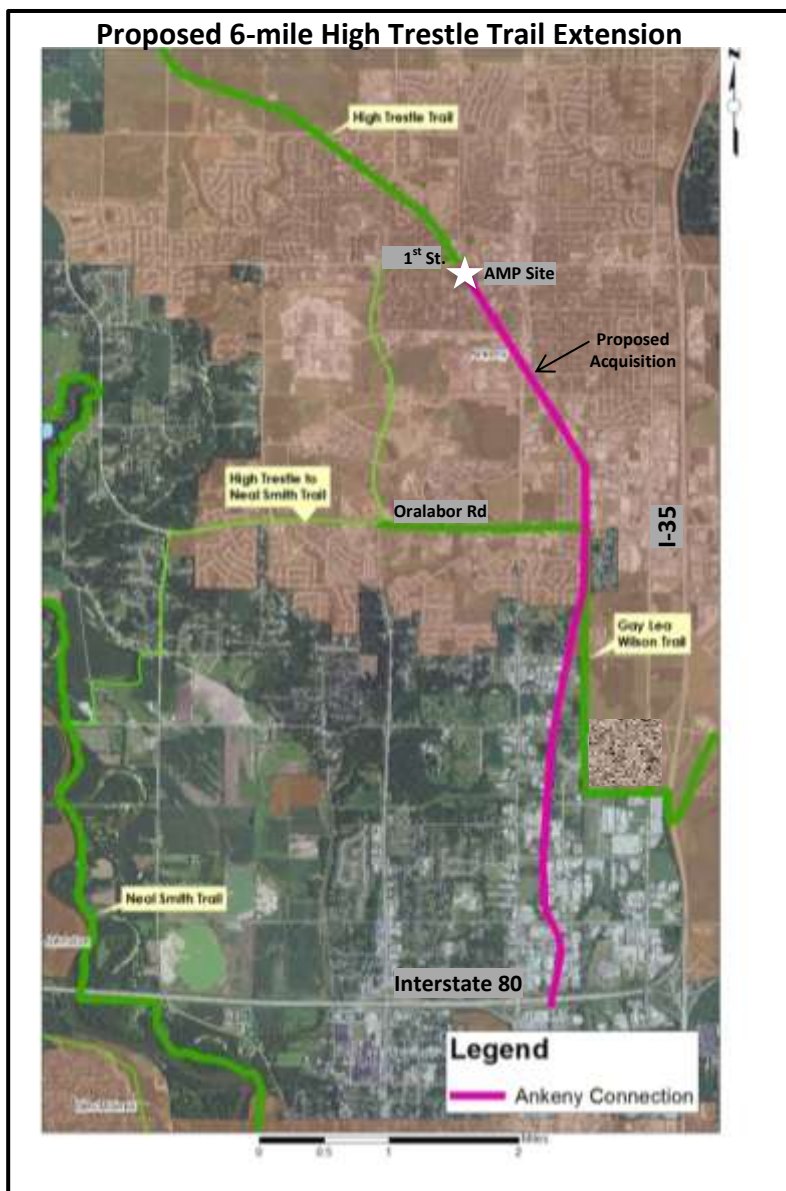
EXTEND THE HIGH TRESTLE TRAIL THROUGH ANKENY!

The Vision

Let's extend the High Trestle Trail through the heart of Ankeny and under Interstate 80, connecting to the Des Moines metro! The extension will begin at Ankeny Market Pavilion Project (AMP) at Uptown, then travel through commercial, residential and business neighborhoods.

This future greenway corridor can provide a high-quality, scenic walking/biking experience. This will help diversify the economic opportunities for the community.

This connection is possible, as the option to purchase a six-mile stretch of discontinued railroad corridor has been negotiated by the Iowa Natural Heritage Foundation. Besides providing a trail route, this purchase provides a portion of the land needed for AMP project site.



Laying the Groundwork

Staff from the City of Ankeny and Polk County Conservation have been working with INHF over the last year to develop this project concept and funding scenarios.

Significant land value will be donated by Union Pacific Railroad. (This will provide matching funds for trail construction grants.)

\$780,000 is committed by the State Recreational Trails Program

\$600,000 is requested from the Ankeny City Council. This is less than **10%** of total project costs.

The purchase must be completed by December 5, 2013. The trail will be owned and maintained by the City of Ankeny and Polk County Conservation.

over...

Your voice is needed now

The Ankeny City Council has not committed to the project yet, because they want public input.

The mayor and council members need to hear from you now.

- On October 14th they will discuss the project in a work session (5 PM at City Council Chambers).
- On October 21st, the City Council will decide whether to support this project.

The council must support the project on Oct. 21 in order to keep the trail opportunity alive. If not, the land purchase cannot be finalized by December 5, 2013, as required. After the land is secured, there will be more opportunities to create the vision for the project and its connections to neighborhoods and the regional trail network as a whole.



Views of the proposed trail extension

**To support this vital trail connection,
please contact the Ankeny Mayor and City Council now!**



Mayor Gary Lorenz
glorenz@ankenyiowa.gov



Dave Kissinger
dkissinger@ci.ankeny.ia.us



Wade Steenhoek
wstenhoek@ankenyiowa.gov



Mark Holm
mholm@ankenyiowa.gov



Bobbi Bentz
bbentz@ankenyiowa.gov



Jim McKenna
jmckenna@ankenyiowa.gov